



Census 2021 Vision Update Packages

What's Coming With The 2021 Census

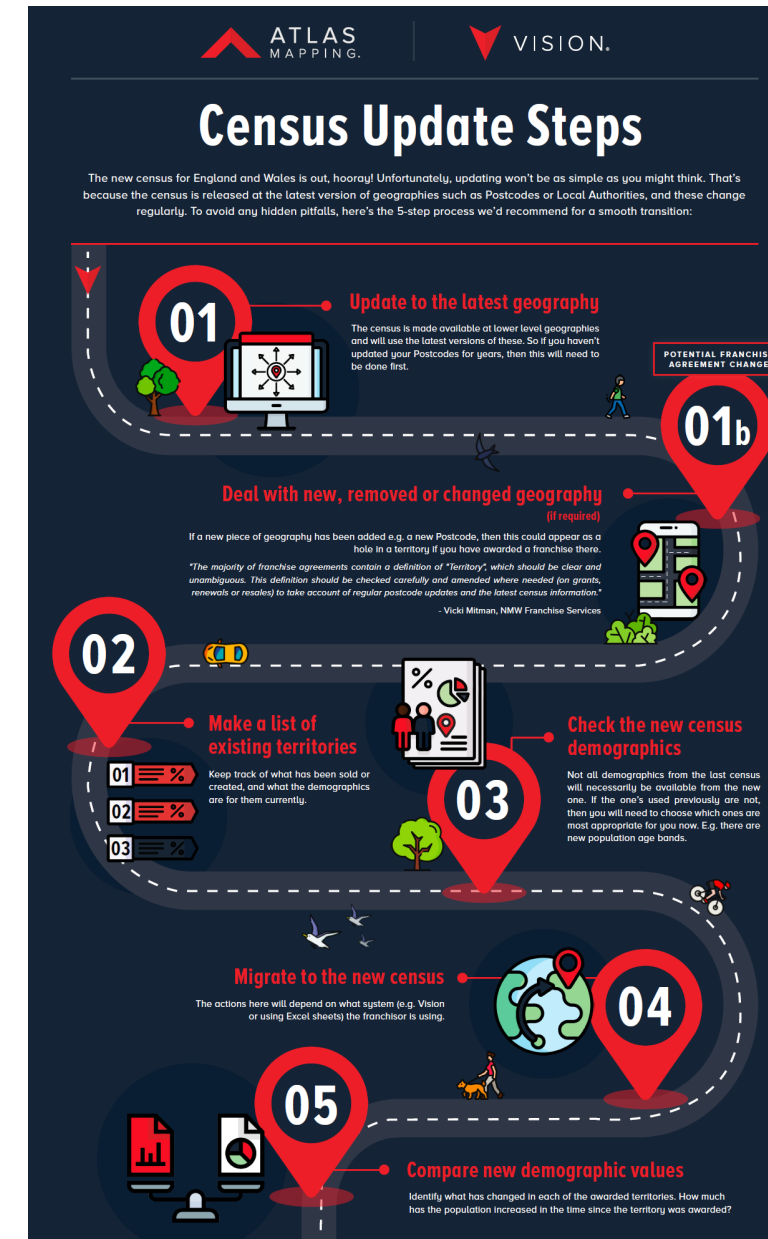
The 2021 census will release will bring with it new demographics and also new geography boundaries. This means that in order to use the new census you will need to also update any territories to the new geography.

We have created a 5 step process for updating to the new census which can be seen on the infographic image to the right. You can also download the infographic [here](#).

To support you we have created service packages which save you time and make the most of the opportunity the new census brings.

PLEASE NOTE that the initial release of the census will only be for England and Wales. For more detail on the census release you can check out this [article](#).

The following pages describe what each service package provides.



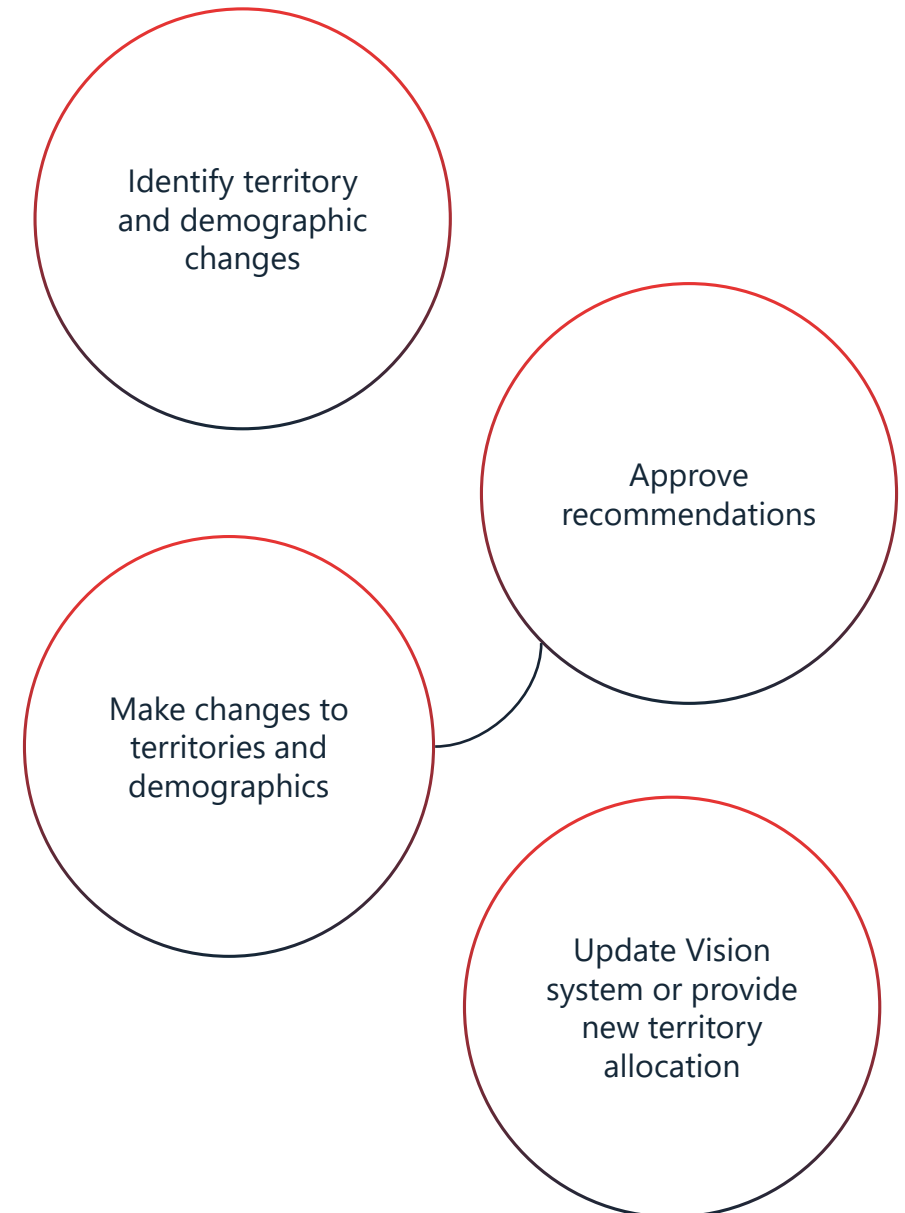
Alongside the following options, you can also choose this add-on pack. Choosing to have our support in the update means that we will handle updating your territories to the latest geography and demographics.

We will highlight the new geography being added to territories and recommend which territories to assign them to. We will select the matching 2021 census demographics and any “best-fit” demographics where they don’t entirely match. We will also create any custom demographics and make you aware of changes that will impact your system.

Once you approve our recommendations, we will go through your network(s) and manually change the territory boundaries and demographics.

PRICE

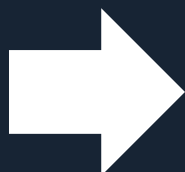
POA



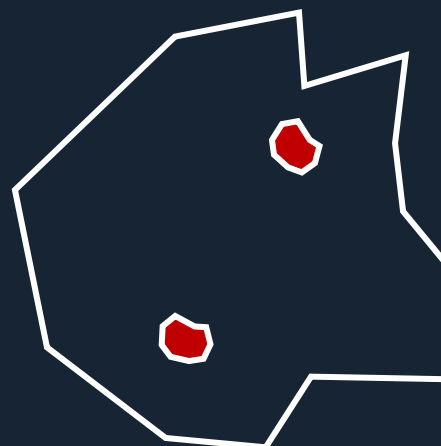
Territory before update



Households	60,000
Population	100,000
Age 0 to 7	6,000



Territory after update



Households	62,000
Population	105,000
Age 0 to 9	9,000

Once the new census is available in Vision, you will be able to update it at the click of a button. It will be down to you to track which new demographics you want and to handle any of the territory boundary changes that may occur.

This workload's size will depend on how many territories you have and the number of demographics you have assigned to your layers.

New Geography

When you update, there will be new geography added to your system e.g. new Postcodes. The red areas show how this might look after you update.

New Demographics

It might be that you will not be able to access the same demographics in the new census. So, in this example it's not possible to continue using the age band 0 to 7.

Territories before update

Territory	Households	Population
A	35,000	60,000
B	50,000	80,000
C	36,000	65,000

Territories after update

Territory	Households	Population
A	38,000	65,000
B	55,000	92,000
C	34,000	70,000

In this package, we will give you a before and after view of the demographic changes for each territory across the network.

We will also recommend which new demographics you should use with the new census.

PRICE


Vision Subscribers

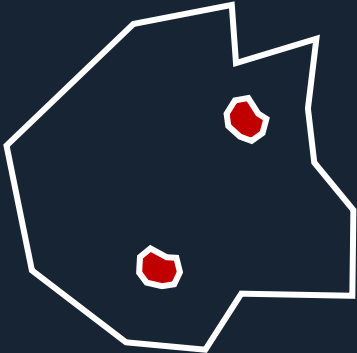
£400+ VAT

Non-Vision Subscribers

POA*

* Your price will depend on what format you are able to provide your existing territories and the number of territories.

Territory A

Territory A

Each territory report will give a summary of the territory as it currently exists, and any changes made after the update. This may include new geography, demographics and demographic values. Reports will be for sold territories.

PRICE

Vision Subscribers

Up to 5 Territories £400

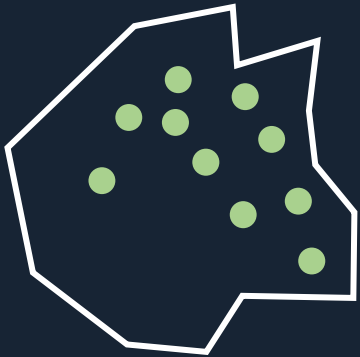
Each Extra Territory £75

Non-Vision Subscribers

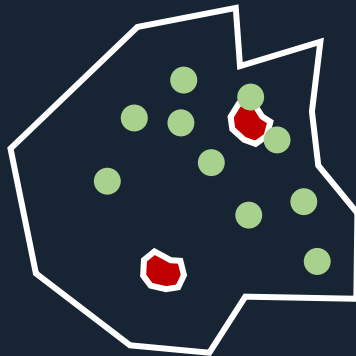
POA*

* Your price will depend on what format you are able to provide your existing territories and the number of territories.

Territory A



Territory A



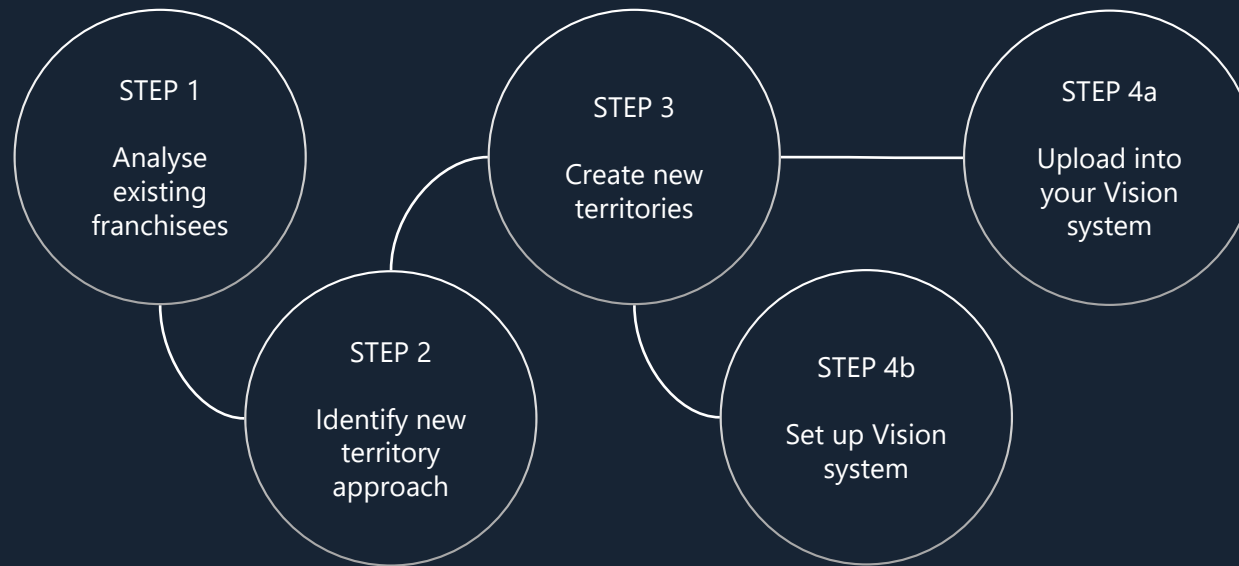
Plotting customer locations can reveal an incredible amount of how well your franchisees are covering their territory. It will show opportunities for growth to use alongside the updated demographics. It can also help reveal the potential for reshaping territories for franchisees close to renewal. Or highlight parts of a territory where a franchisee can sell to other franchisees.

PRICE

Vision and Non-Vision Subscribers

POA*

* Your price will depend on what format you are able to provide your existing territories, customer data and the number of territories.



With a territory mapping project, we can take your franchise network to the next level. The project's end goal is to define every territory opportunity you have available across the country. We ensure that each territory is optimised to contain enough potential customers for a franchisee to be successful.

Our approach provides a consistent framework for businesses of any size.

PRICE

Projects typically cost between £3,000 to £8,000 depending on the size of your network and the complexity of assessing your customer data.